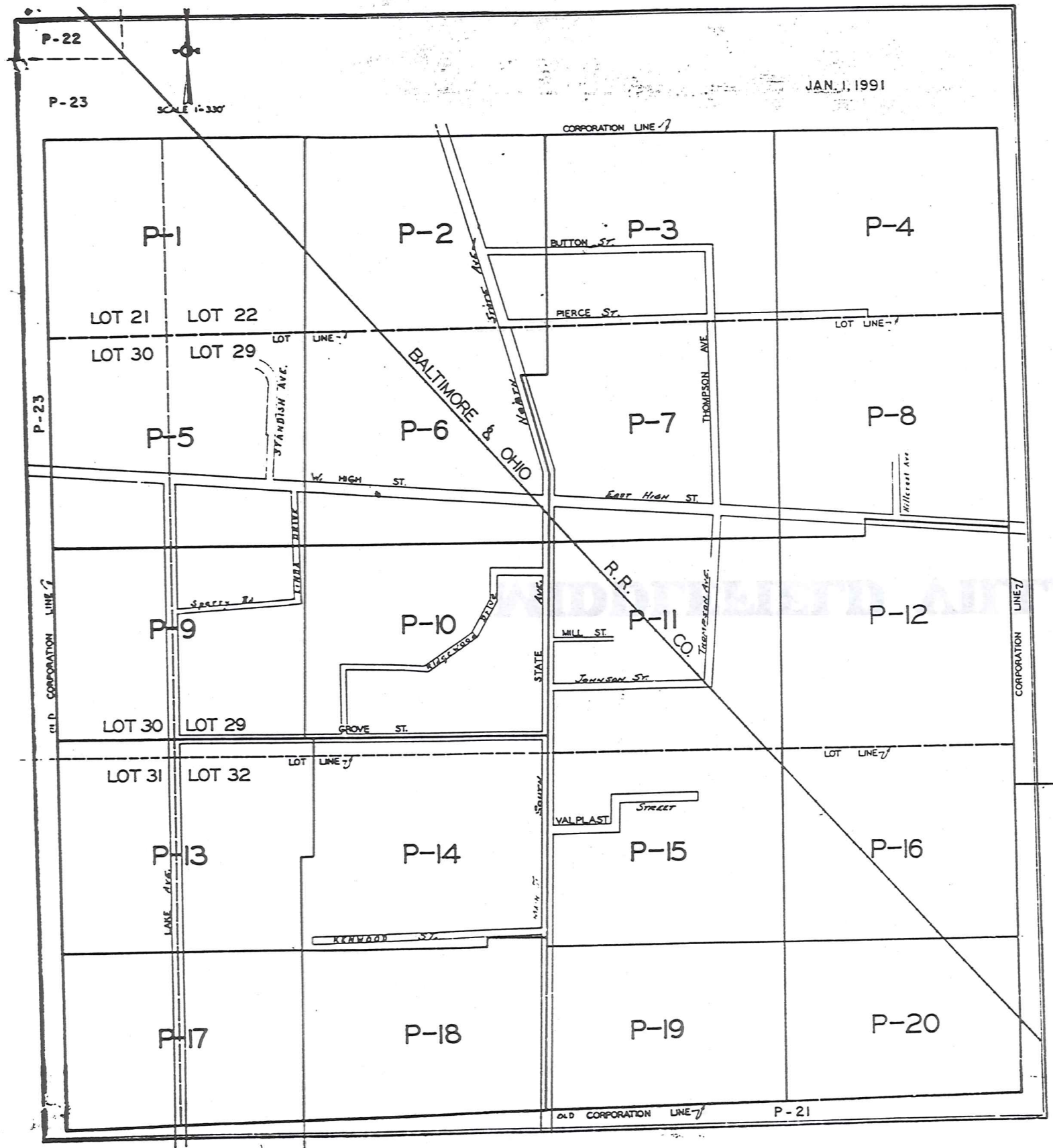
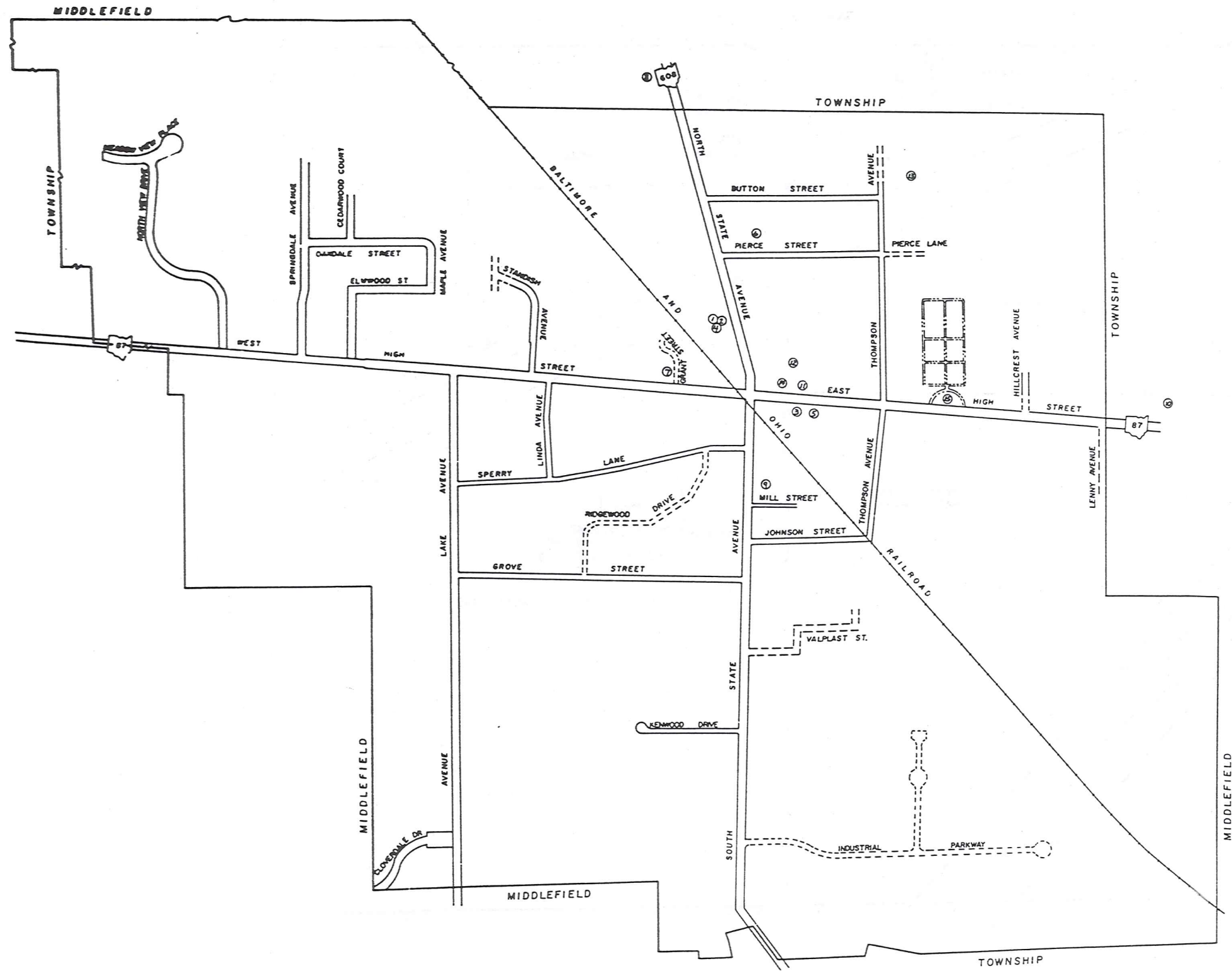


MIDDLEFIELD VILLAGE

INDEX MAP OF
MIDDLEFIELD VILLAGE
GEAUGA COUNTY, OHIO



LEGEND
 P-7 ... INDICATES MAP NUMBER
 --- ... INDICATES MAP BOUNDARY

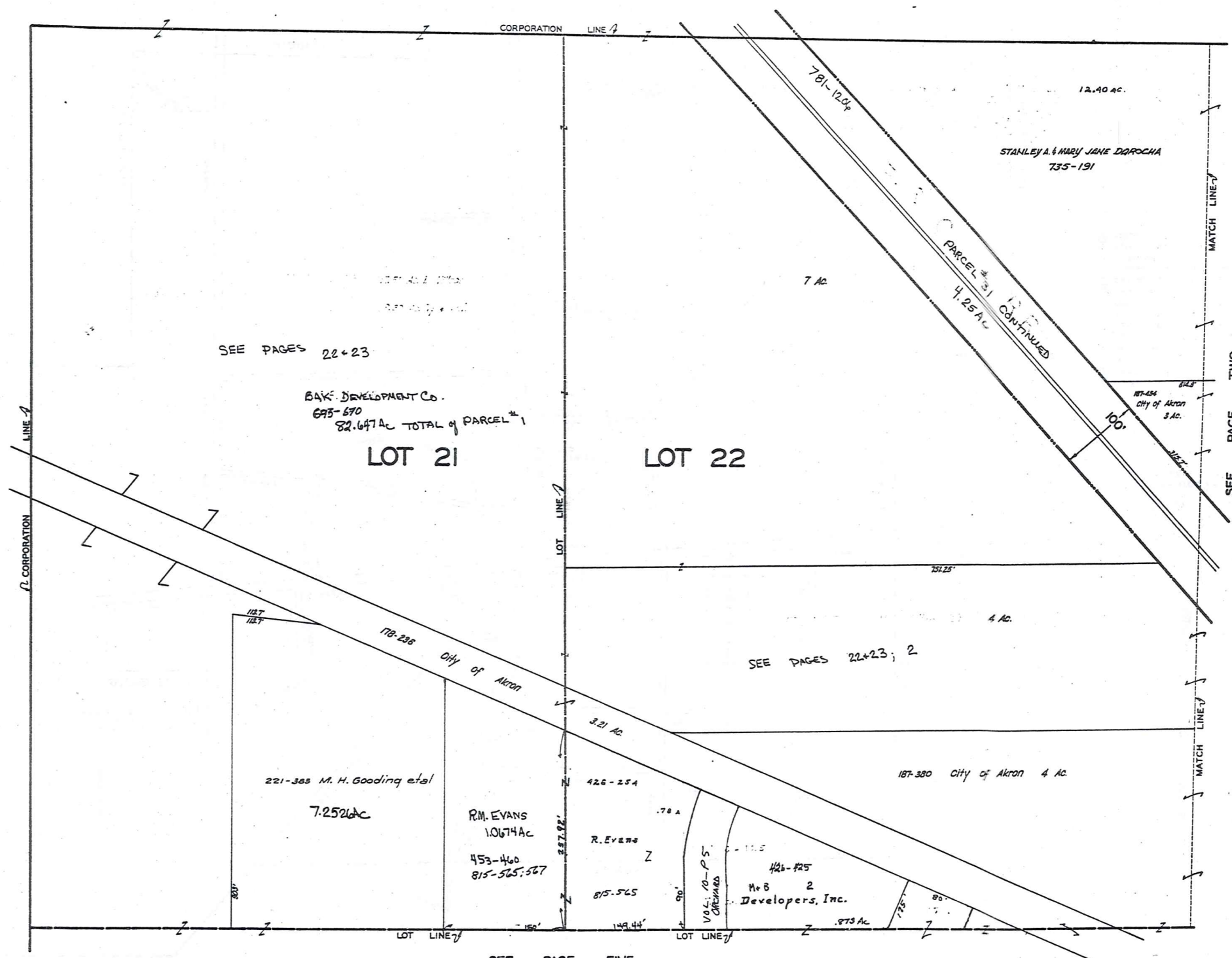


SCALE: 1" = 400'

== DEDICATED ROAD
 - - - - NON DEDICATED ROAD

- ① MIDDLEFIELD MUNICIPAL CENTER
- ② MIDDLEFIELD VILL. POLICE DEPT.
- ③ UNITED STATES POST OFFICE
- ④ MIDDLEFIELD VOL. FIRE DEPT.
- ⑤ VETERANS MEMORIAL HALL
- ⑥ BETHESDA NURSING HOME
- ⑦ WESLEYAN METHODIST CHURCH
- ⑧ MIDDLEFIELD REVIVAL CHURCH
- ⑨ FIRST UNITED METHODIST CHURCH
- ⑩ SAINT LUCY CHURCH
- ⑪ CARDINAL JUNIOR HIGH SCHOOL
- ⑫ MIDDLEFIELD ELEM. SCHOOL
- ⑬ CARDINAL HIGH SCHOOL
- ⑭ MIDDLEFIELD BRANCH LIBRARY
- ⑮ MIDDLEFIELD CEMETERY

INDEX MAP OF
MIDDLEFIELD VILLAGE
 GEauga COUNTY, OHIO



JANUARY 1, 1978

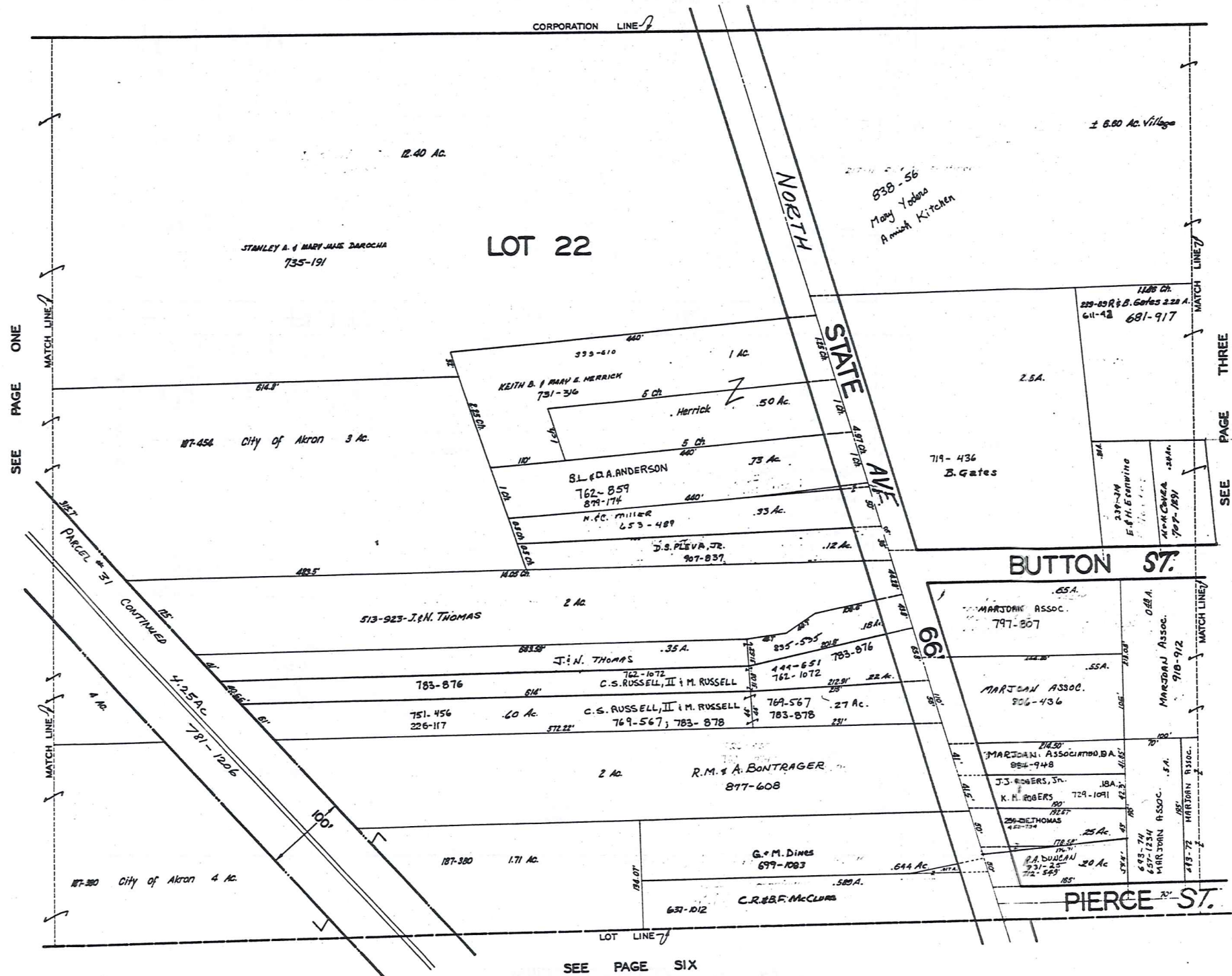
TRW-REDI SCALE IN 1/10 OF AN INCH



1-800-345-7334

RELATIVE REPRESENTATION MIDDLEFIELD VILLAGE PG. 1

MIDDLEFIELD VILLAGE



SEE PAGE ONE

MATCH LINE

MATCH LINE

MATCH LINE

SEE PAGE THREE

SEE PAGE SIX

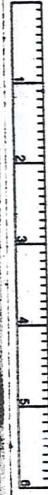


SCALE 1"=66'

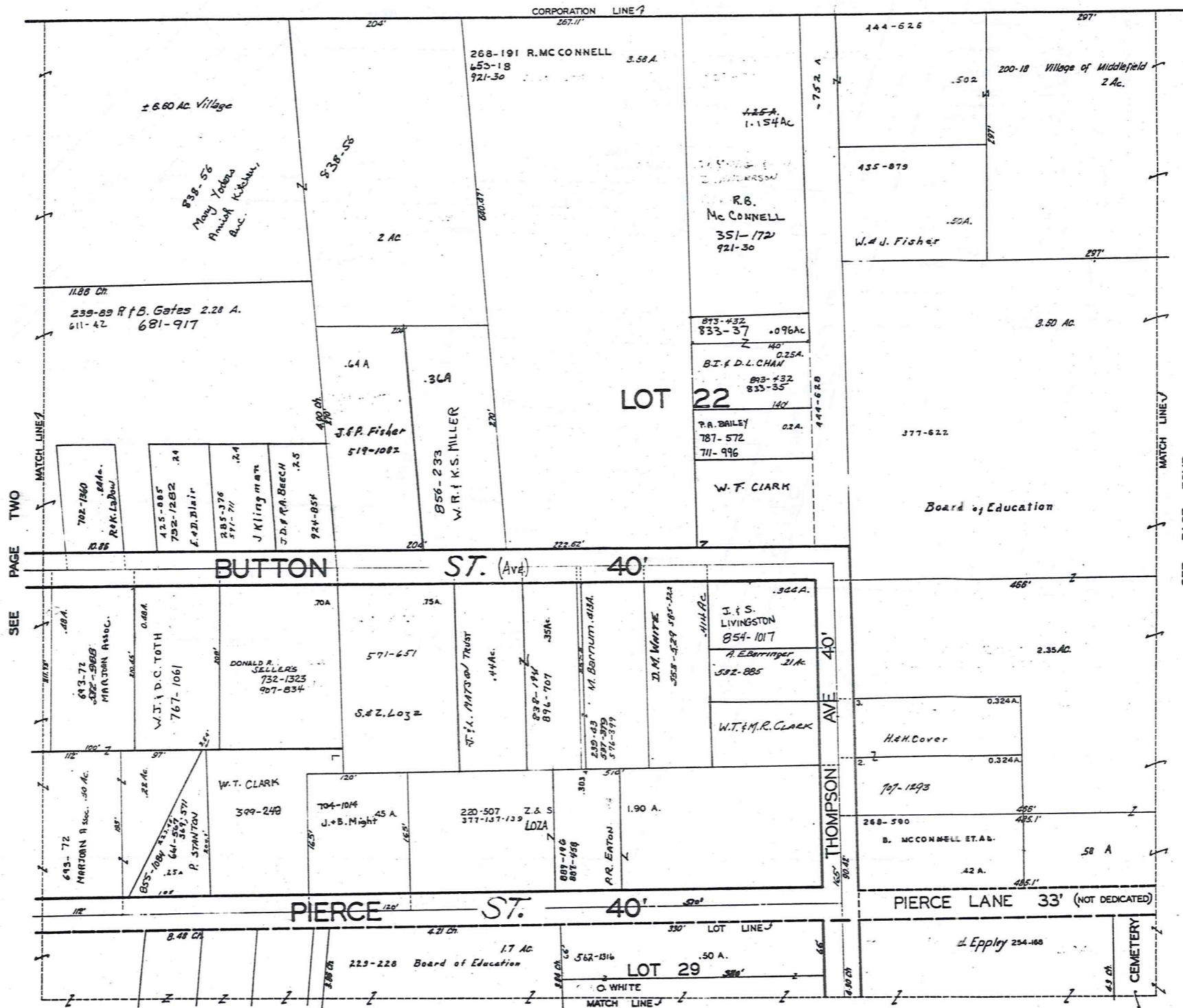
JAN. 1, 1993

285

TRW·REDI
SCALE IN 1/10 OF AN INCH



1-800-345-7334



SEE PAGE TWO

SEE PAGE FOUR

SEE PAGE SEVEN



SCALE 1"=66'

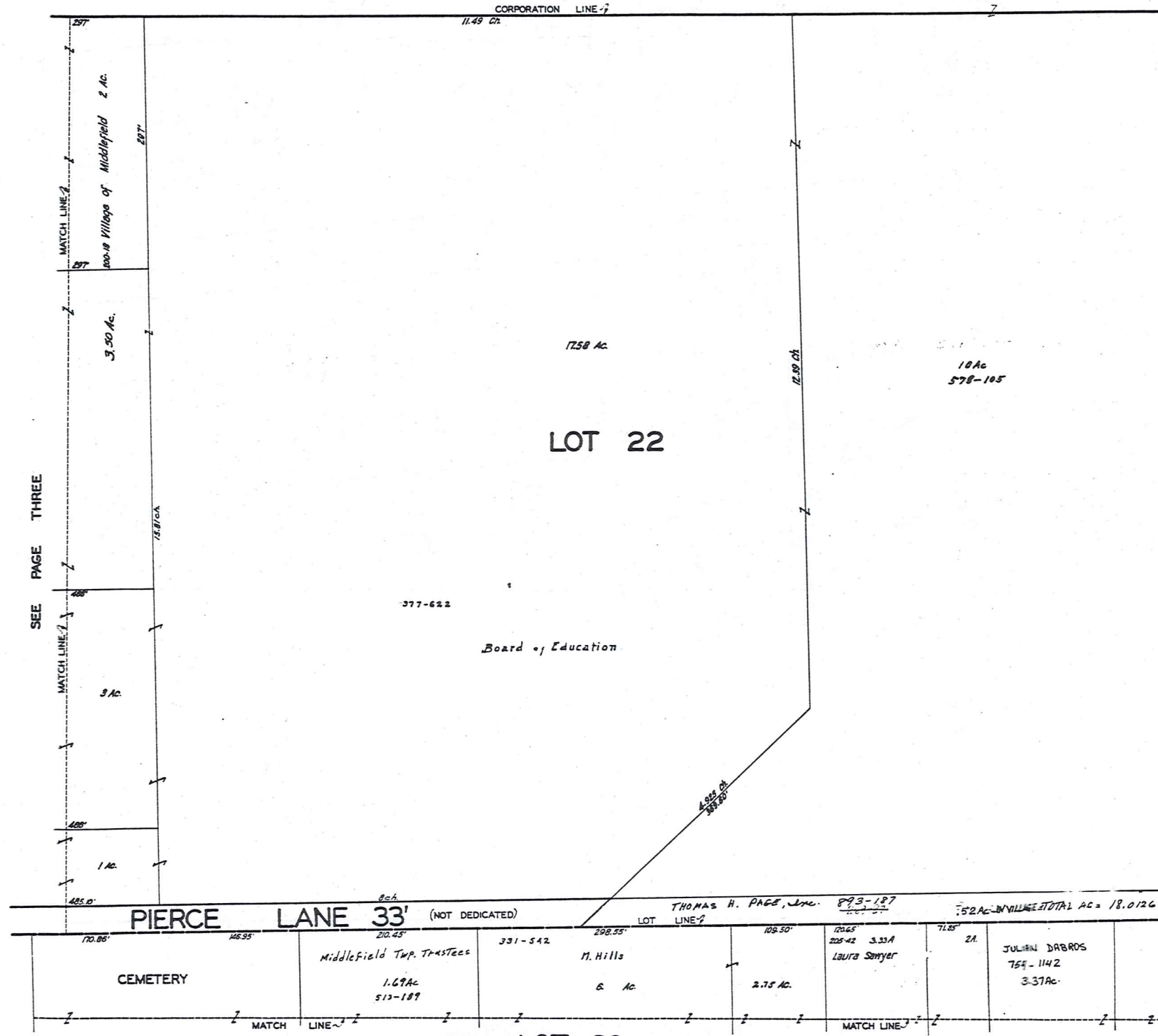
JAN. 1, 1993

TRW-REDI SCALE IN 1/10 OF AN INCH



1-800-345-7334

MIDDLEFIELD VILLAGE



SEE PAGE THREE



TRW:REDI
SCALE IN 1/10 OF AN INCH



1-800-345-7334

SEE P-25

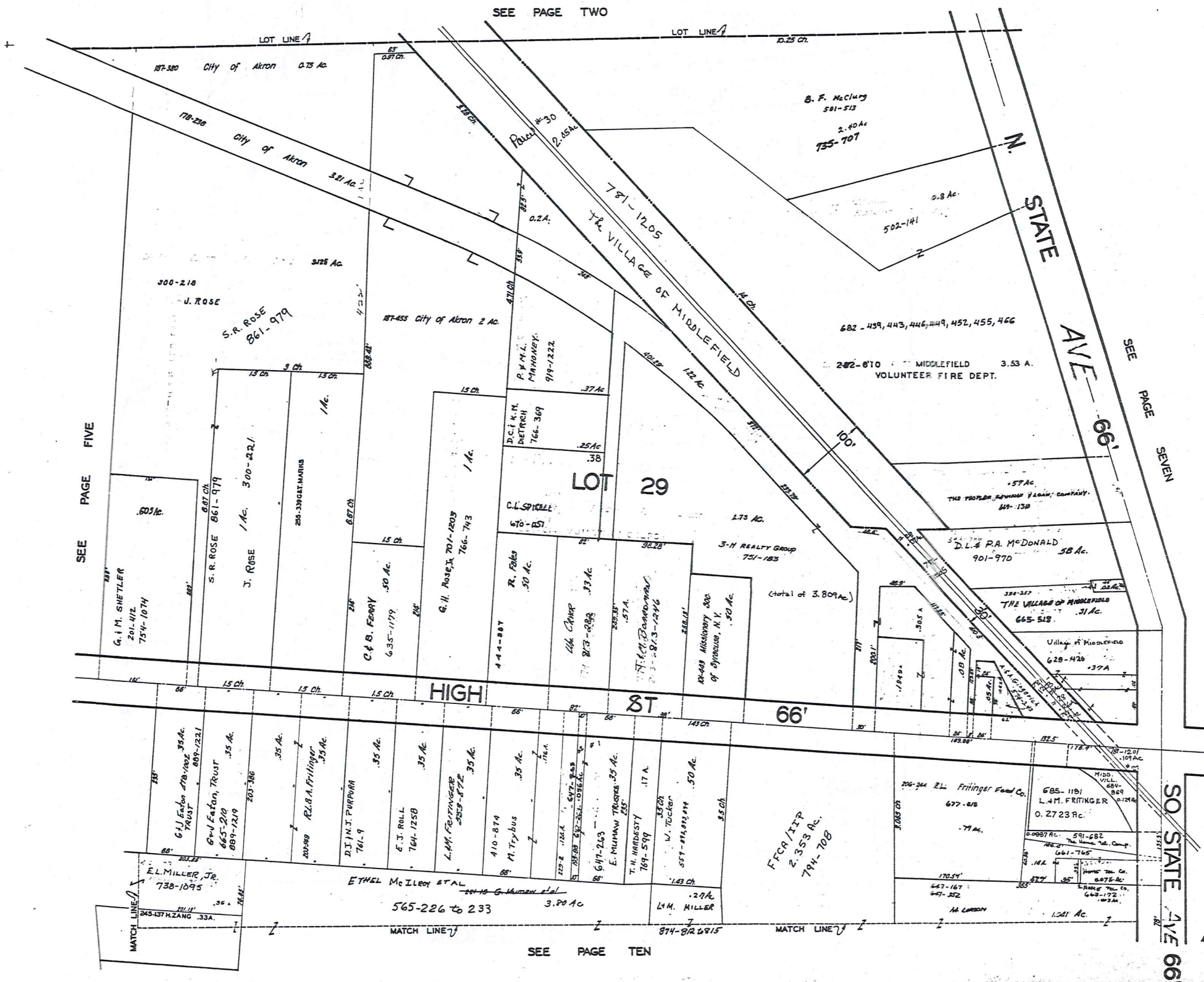
SEE PAGE EIGHT

JANUARY 1993 287
RELATIVE REPRESENTATION

MIDDLEFIELD VILLAGE
PG. 4

MIDDLEFIELD VILLAGE

SEE PAGE TWO



SEE PAGE FIVE

SEE PAGE SEVEN



JAN. 1, 1988

TRW-REDI SCALE IN 1/10 OF AN INCH 1-000-345-1-034

289

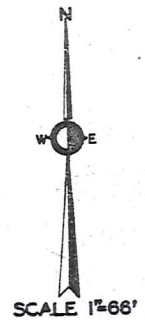
RELATIVE REPRESENTATION MIDDLEFIELD VILLAGE PG. 6

SEE PAGE TEN

MIDDLEFIELD VILLAGE

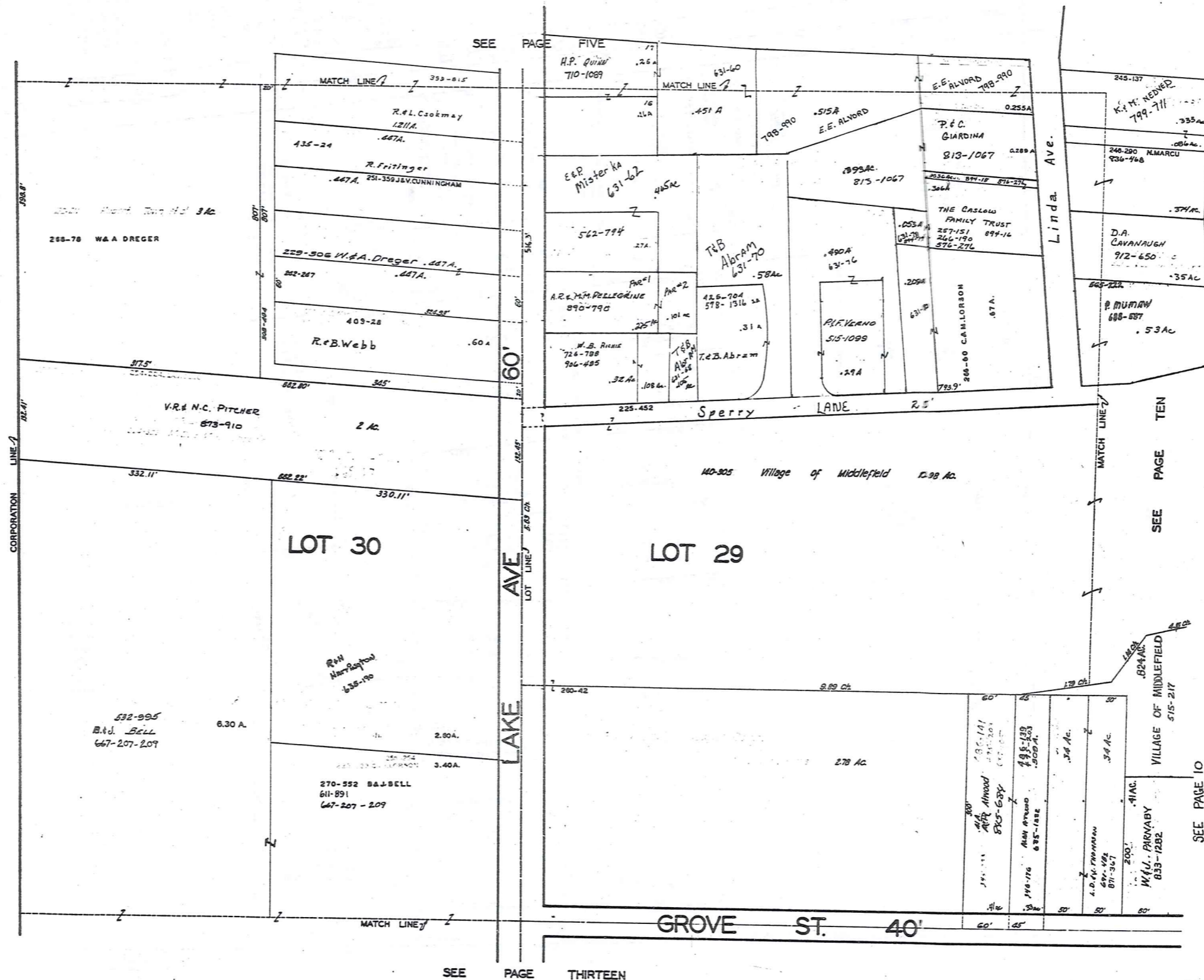


SEE PAGE EIGHT



TRW-REDI SCALE IN 1/10 OF AN INCH 1-800-345-7334

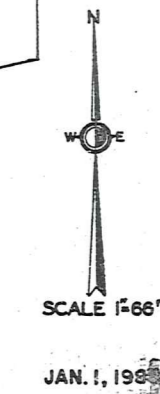
SEE PAGE ELEVEN



SEE PAGE FIVE

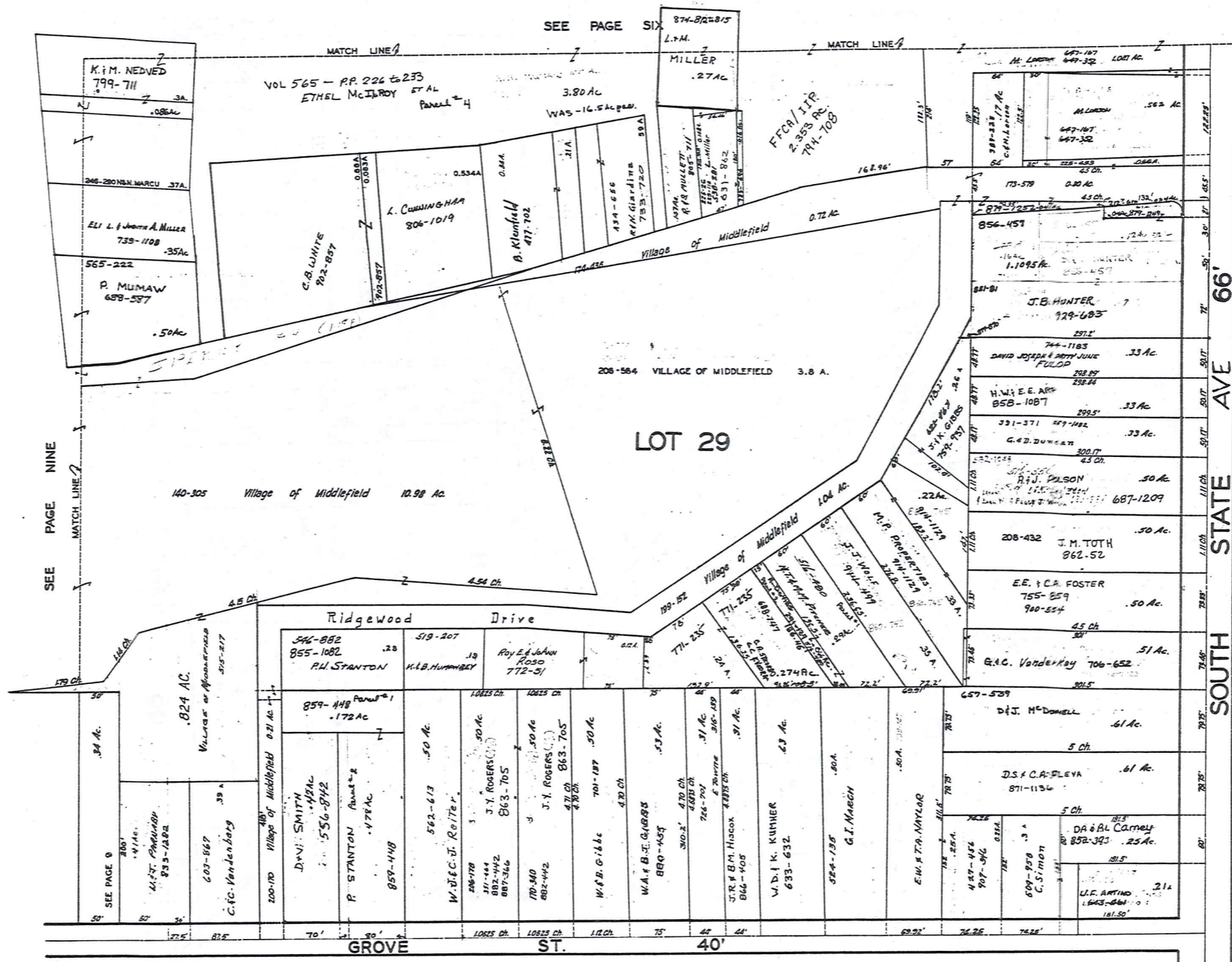
SEE PAGE TEN

SEE PAGE THIRTEEN



TRW-REDI SCALE IN 1/10 OF AN INCH 1-800-345-7334

MIDDLEFIELD VILLAGE



TRW-REDI SCALE IN 1/10 OF AN INCH 1-800-345-7334



SCALE 1"=66'

JAN. 1, 1999

SEE PAGE FOURTEEN

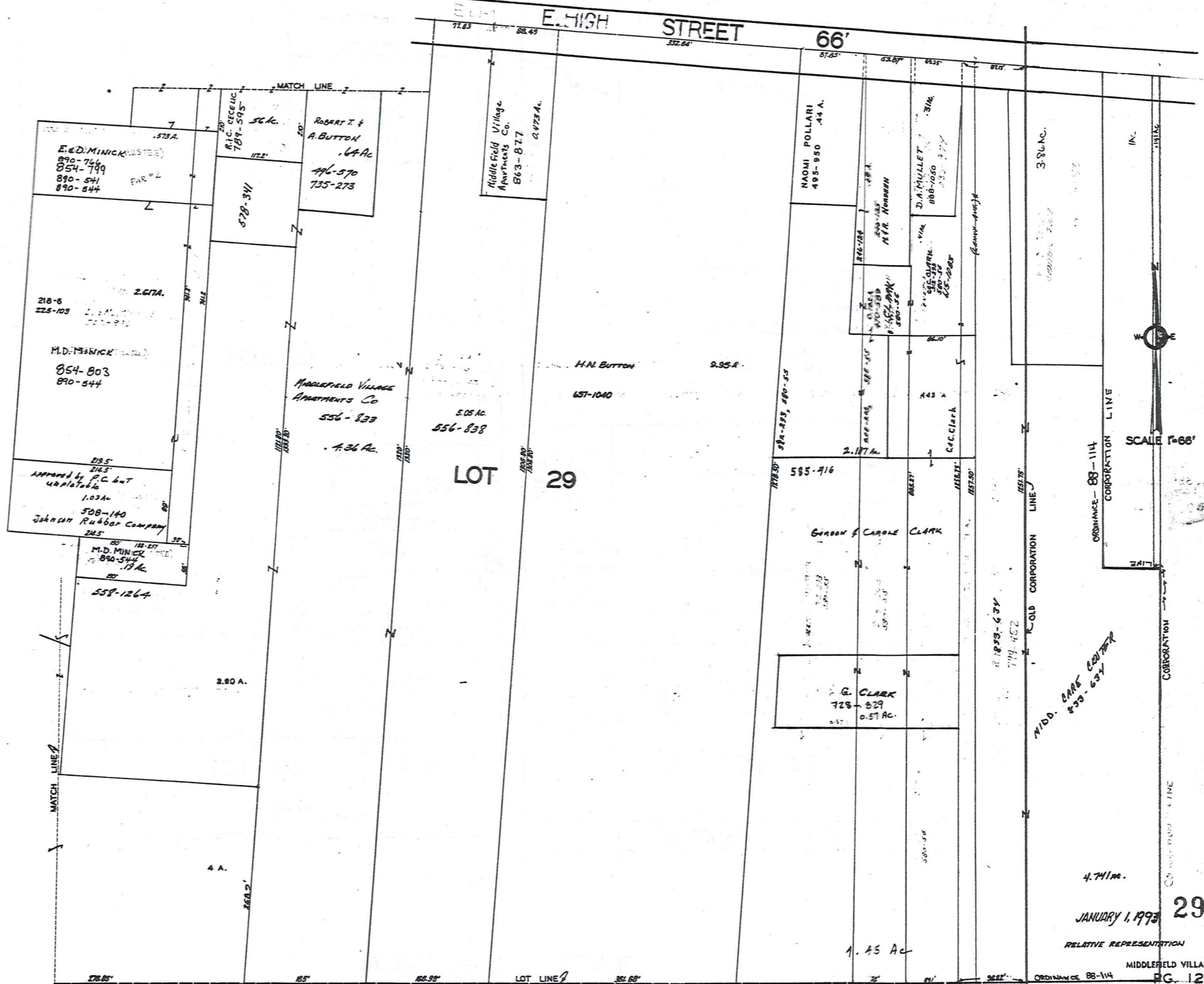
293

MIDDLEFIELD VILLAGE

SEE PAGE EIGHT

SEE PAGE ELEVEN

SEE PAGE SIXTEEN



TRW-REDI SCALE IN 1/10 OF AN INCH

1-800-345-7334

SCALE 1"=66'

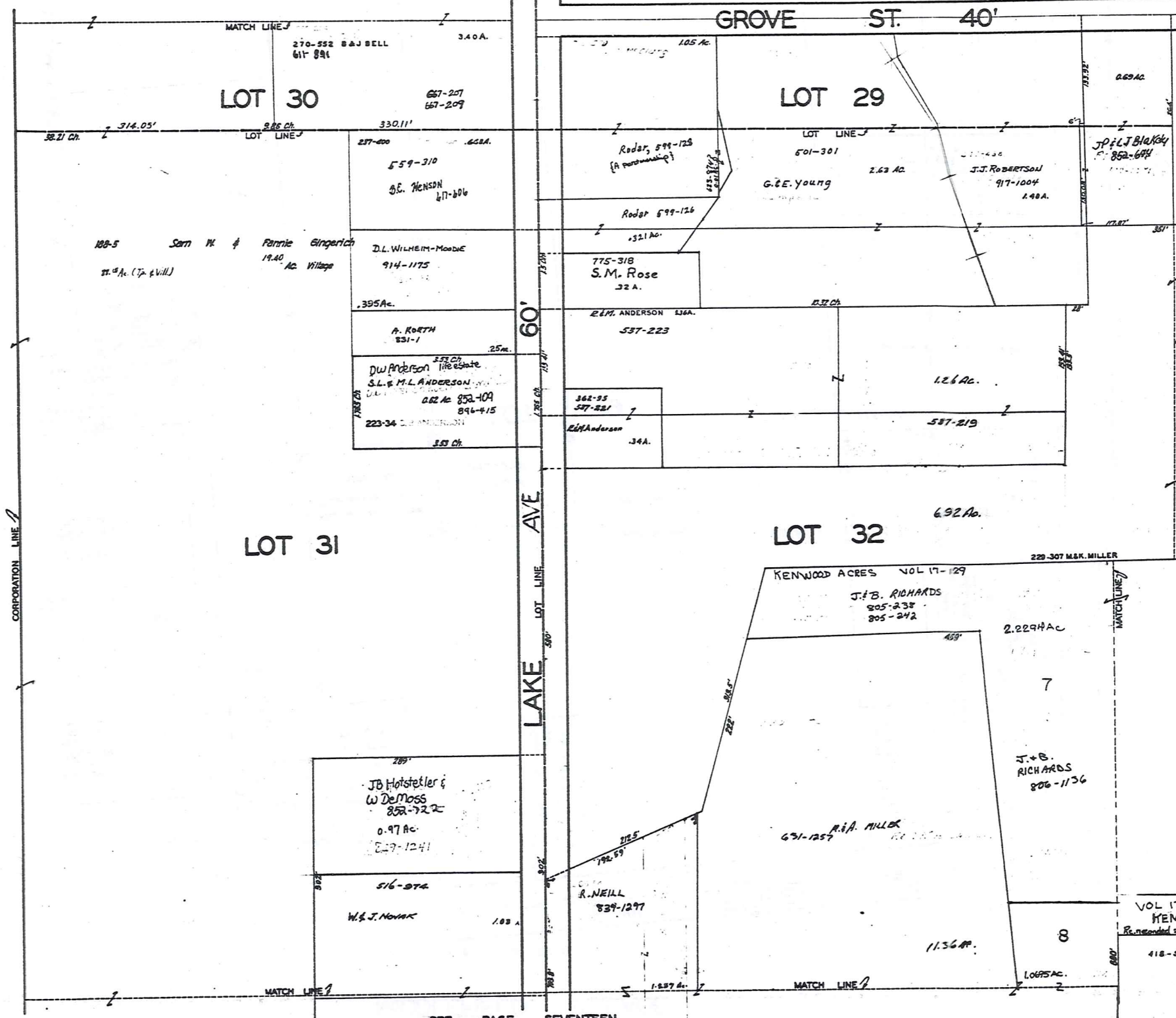
JANUARY 1, 1993 295

RELATIVE REPRESENTATION

MIDDLEFIELD VILLAGE

ORDINANCE 88-114 PG 12 CORPORATION LINE

SEE PAGE NINE



JAN. 1, 1993

SEE PAGE FOURTEEN

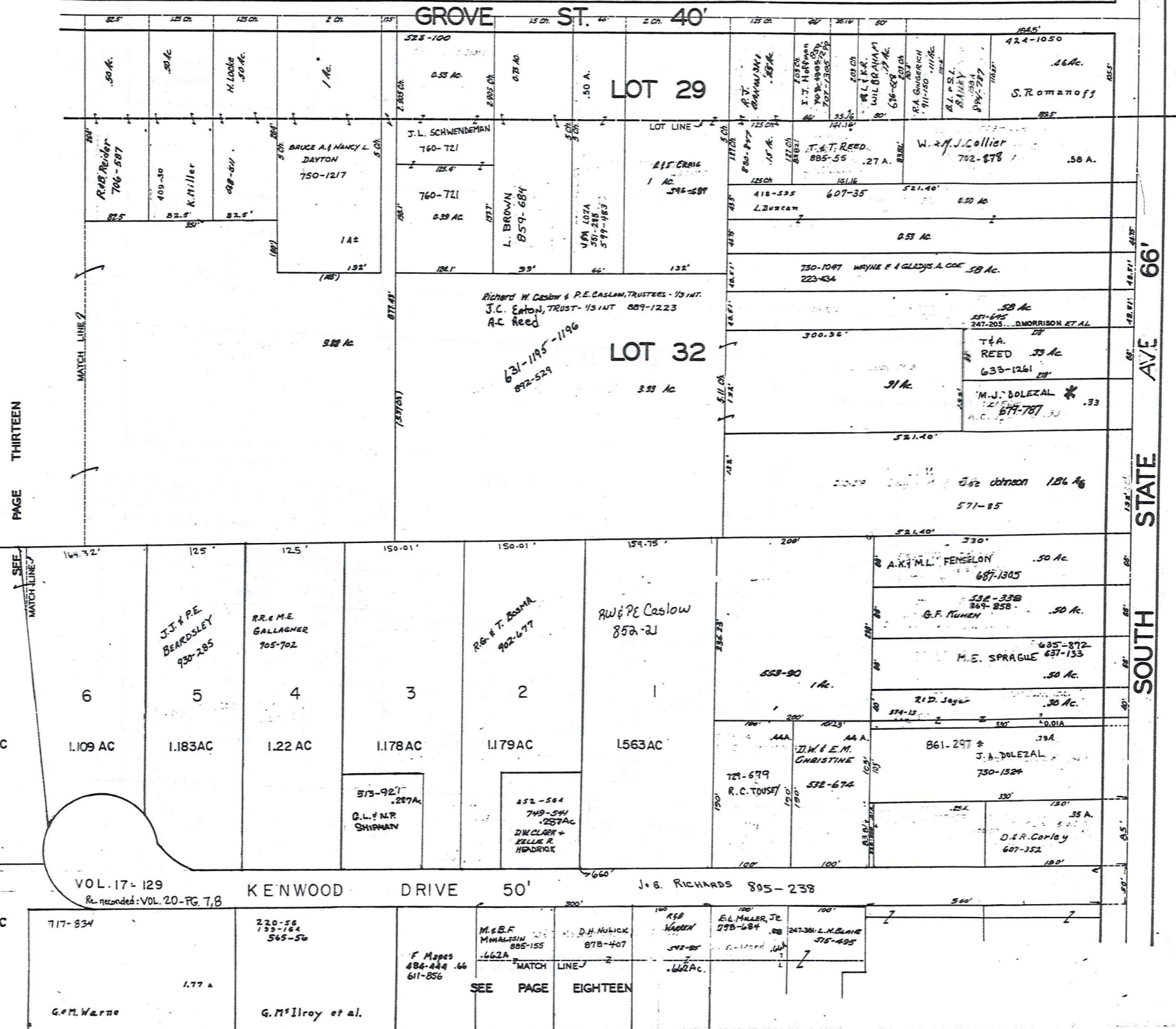
SEE PAGE SEVENTEEN

TRW-REDI SCALE IN 1/10 OF AN INCH 1-800-345-7334

VOL 17-129-130
 KENWOOD ACRES SUB.
 Re-recorded: Vol. 20-PG. 7, B
 418-50
 RELATIVE REPRESENTATION
 MIDDLEFIELD VILLAGE
 PG. 13
 G. & M. WARNE
 1993

MIDDLEFIELD VILLAGE

SEE PAGE TEN



PAGE THIRTEEN

SEE PAGE FIFTEEN

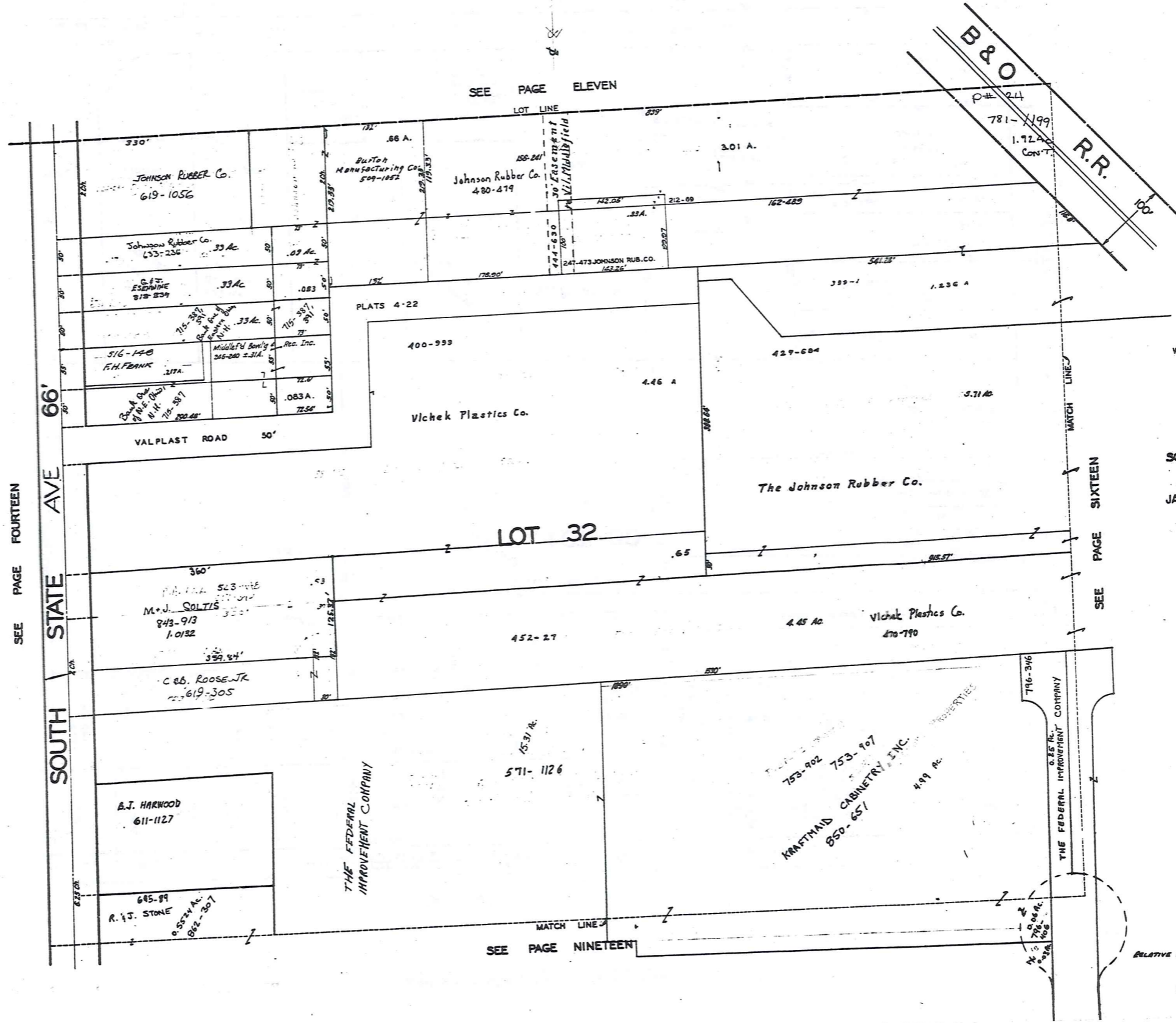


JAN. 1, 1953

TRW-REDI SCALE IN 1/10 OF AN INCH 1-800-345-7334

297

RELATIVE REPRESENTATION MIDDLEFIELD VILLAGE PG. 14



SEE PAGE FOURTEEN

SOUTH STATE AVE 66'

SEE PAGE ELEVEN

SEE PAGE SIXTEEN

SEE PAGE NINETEEN



SCALE 1"=66'

JAN. 1, 1998

RELATIVE REPRESENTATION

MIDDLEFIELD VILLAGE PG. 15

TRW-REDI SCALE IN 1/10 OF AN INCH

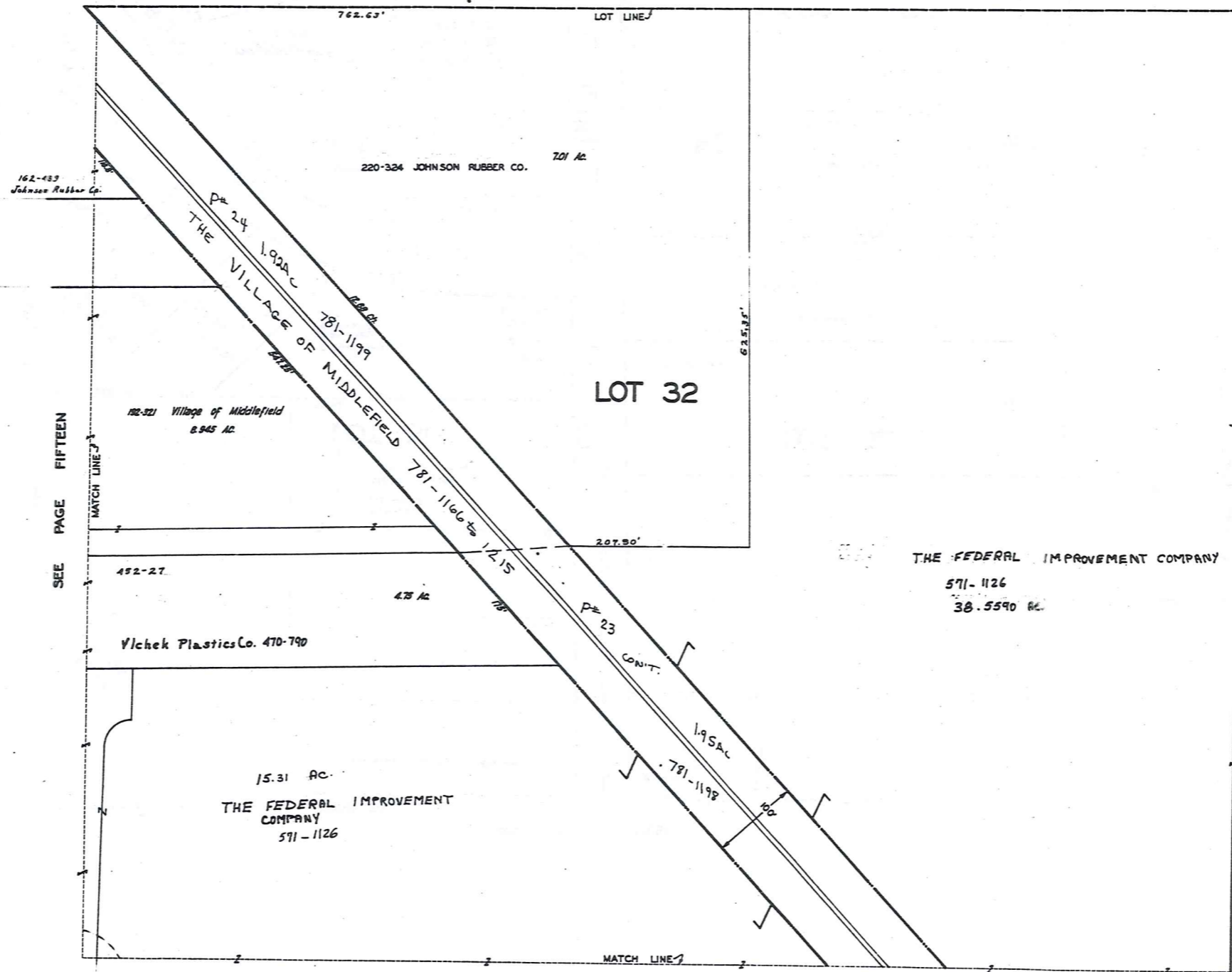


1-800-345-7334

MIDDLEFIELD VILLAGE

PAGE 16

SEE PAGE TWELVE

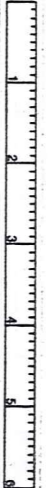


SCALE 1"=66'

JAN. 1, 1993

SEE PAGE 21

TRW-REDI SCALE IN 1/10 OF AN INCH



1-800-345-7334

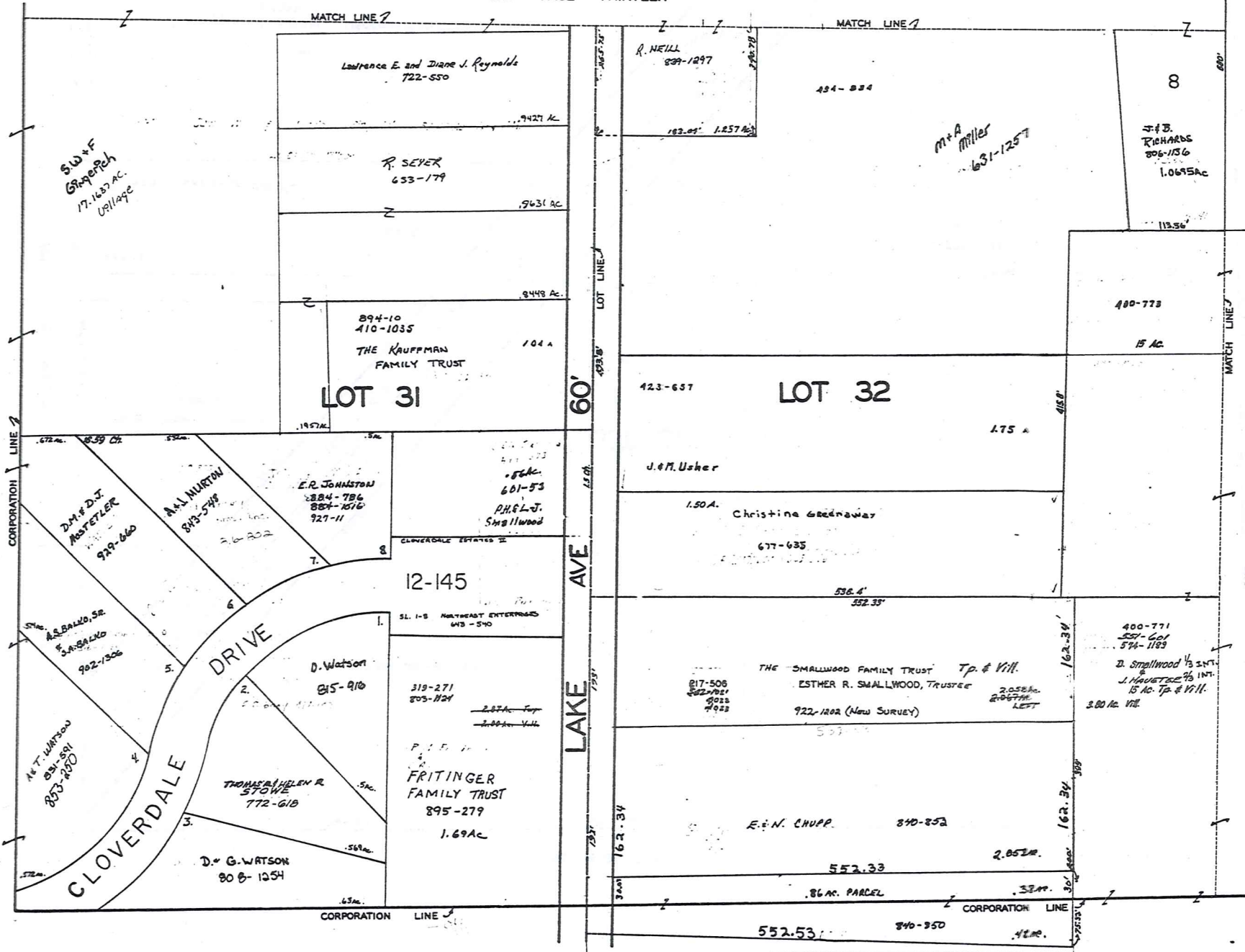
SEE PAGE TWENTY

299

MIDDLEFIELD VILLAGE

VOL 17-129
KENWOOD ACRES SUB.
Recorded VOL. 20-PG. 7, 8

SEE PAGE THIRTEEN

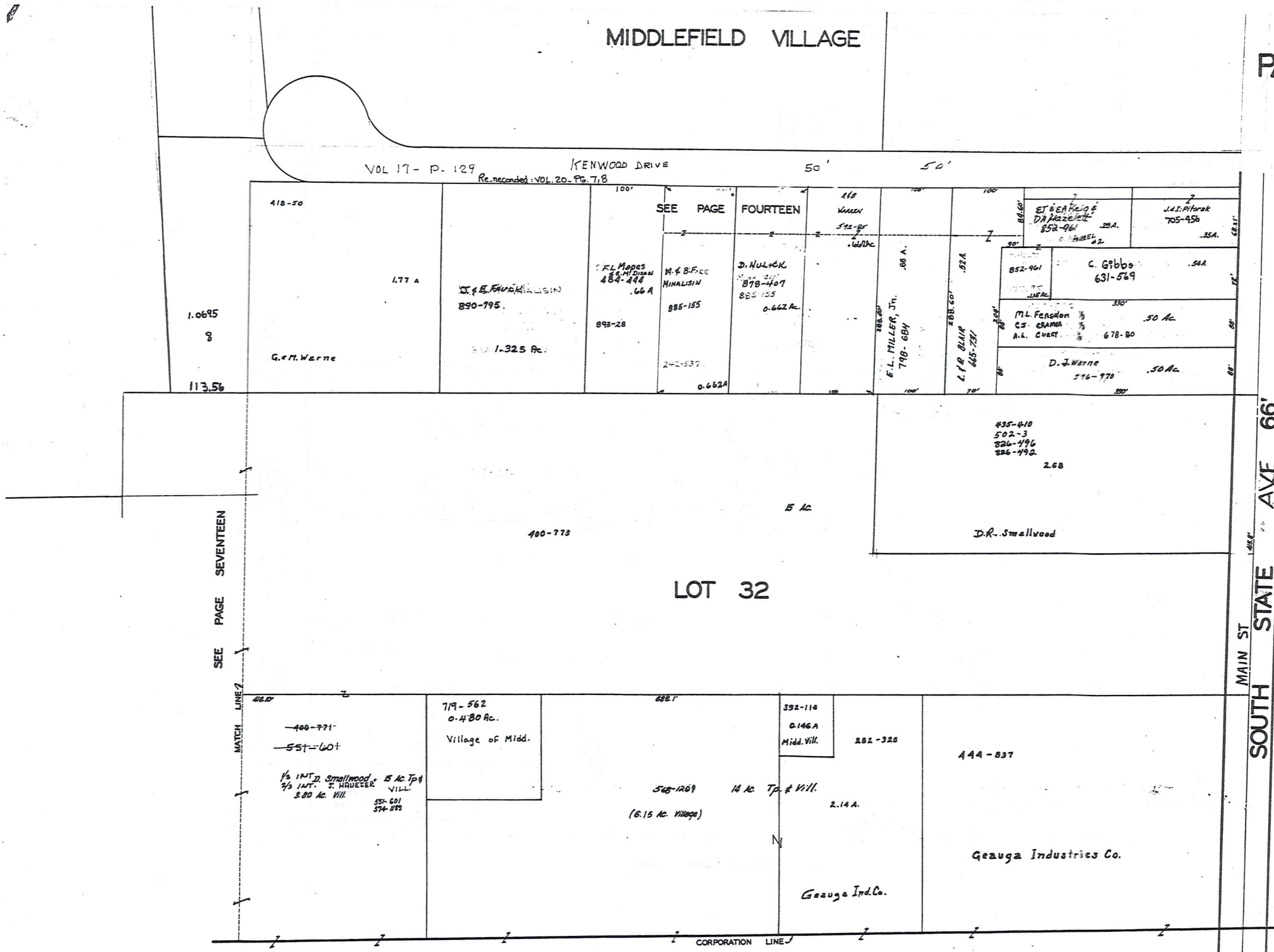


TRW-REDI
SCALE IN 1/10 OF AN INCH

1-800-345-7334

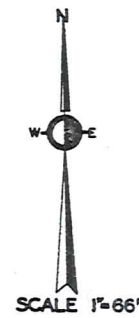
MIDDLEFIELD VILLAGE

VOL 17- P. 129 KENWOOD DRIVE 50' 50'



TRW-REDI SCALE IN 1/10 OF AN INCH

1-800-345-7334



SEE PAGE NINETEEN

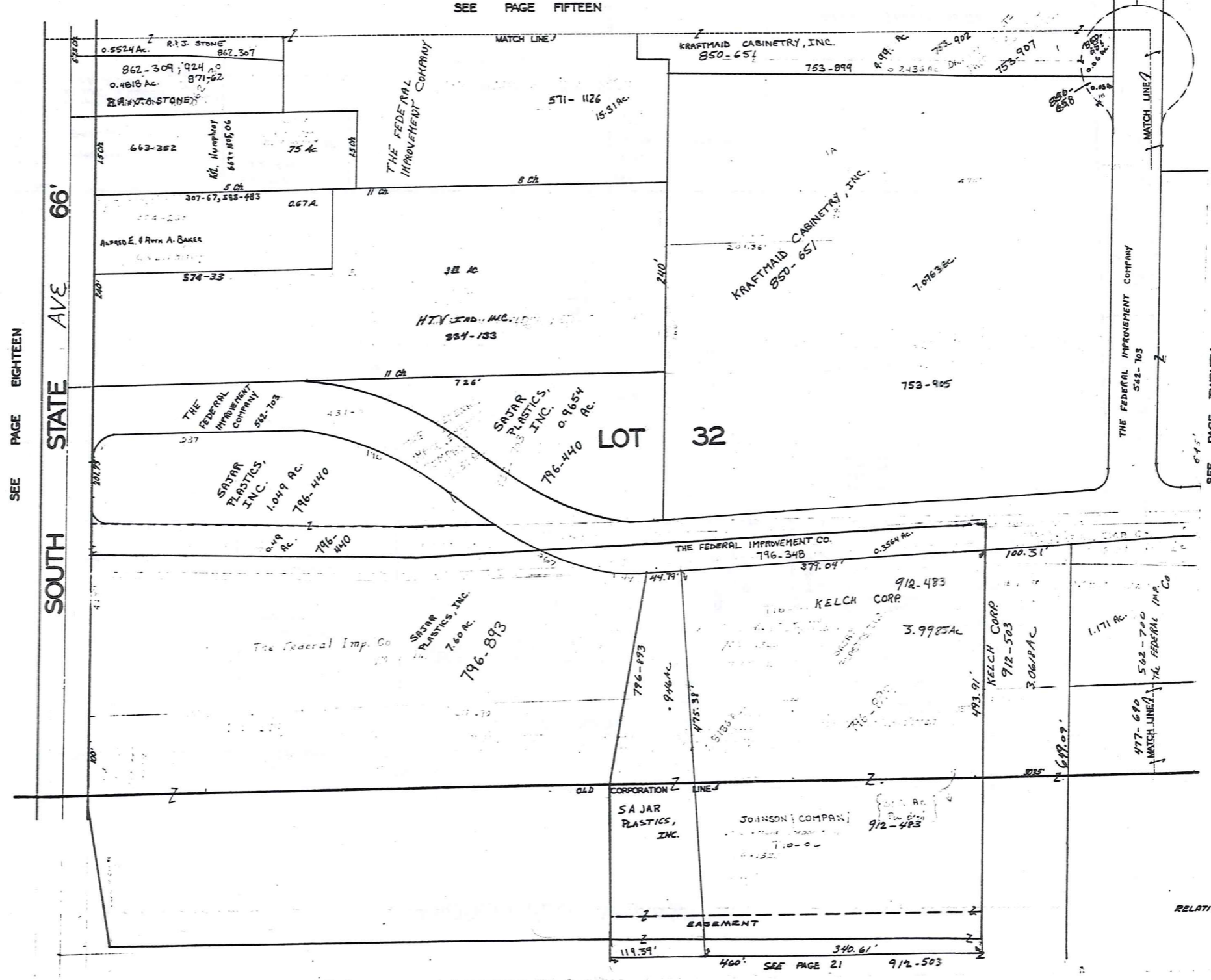
SEE PAGE SEVENTEEN

301

JANUARY 1, 1993 RELATIVE REPRESENTATION

MIDDLEFIELD VILLAGE PG. 18

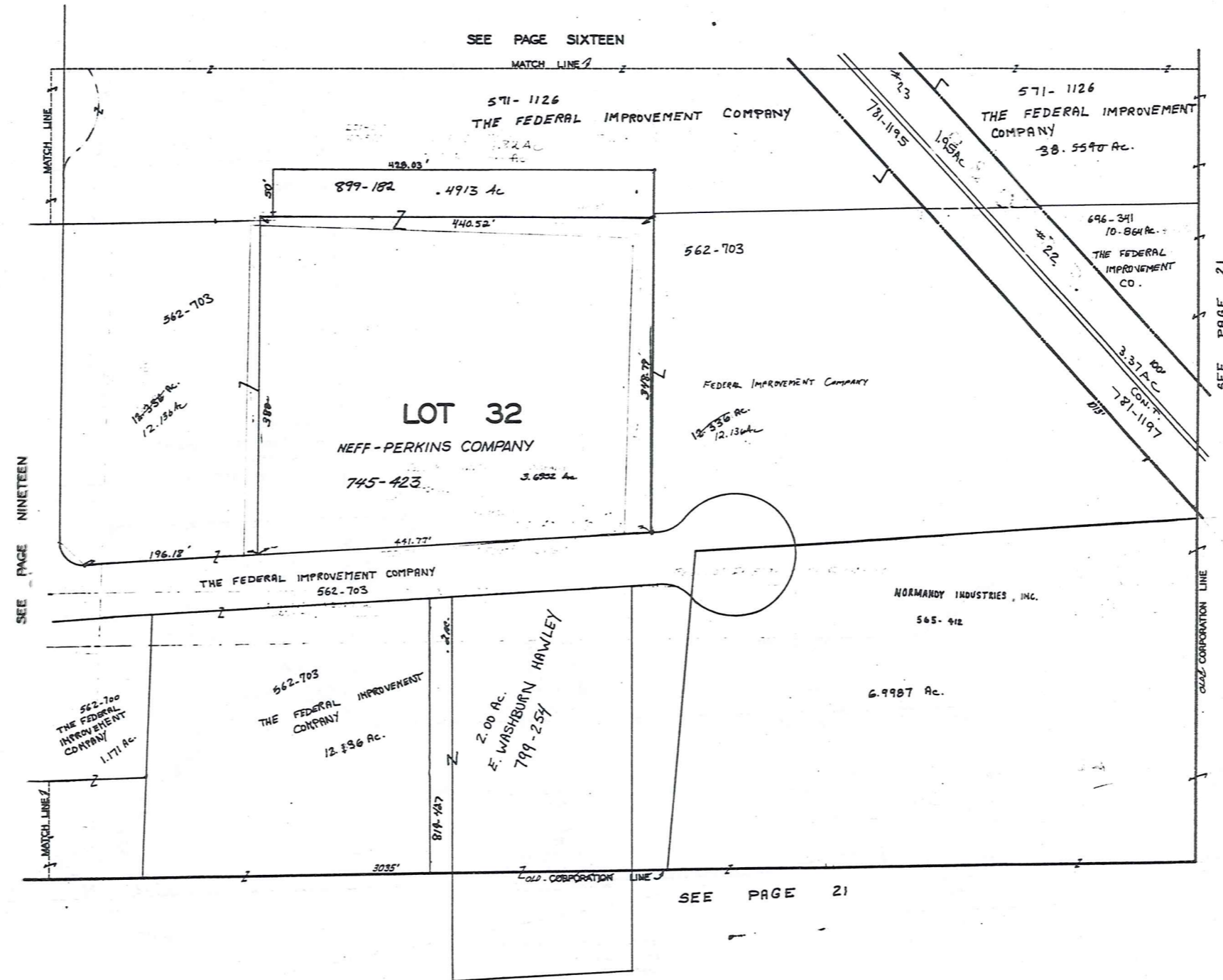
MIDDLEFIELD VILLAGE



TRW-REDI

SCALE IN 1/10 OF AN INCH

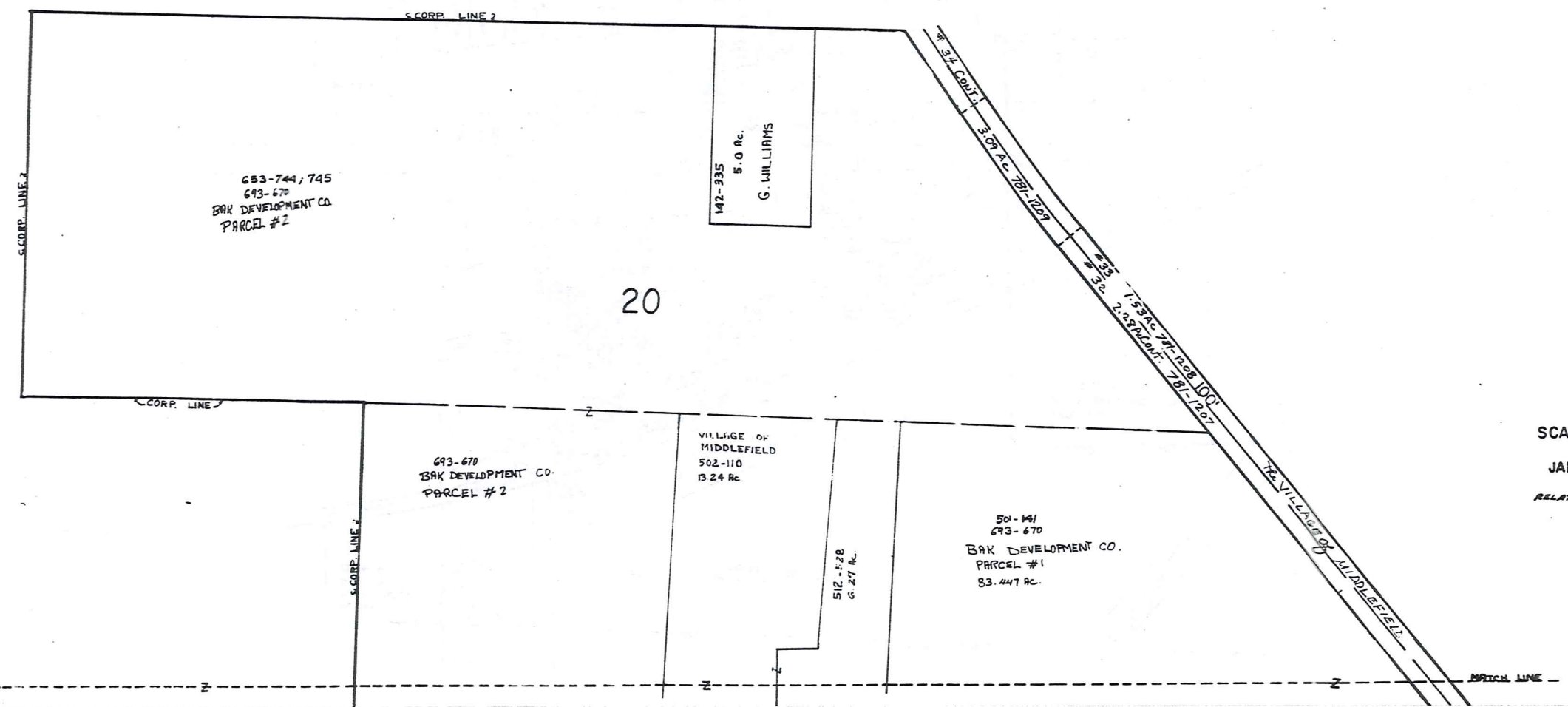
1-800-345-7334



JAN. 1993-1

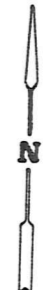
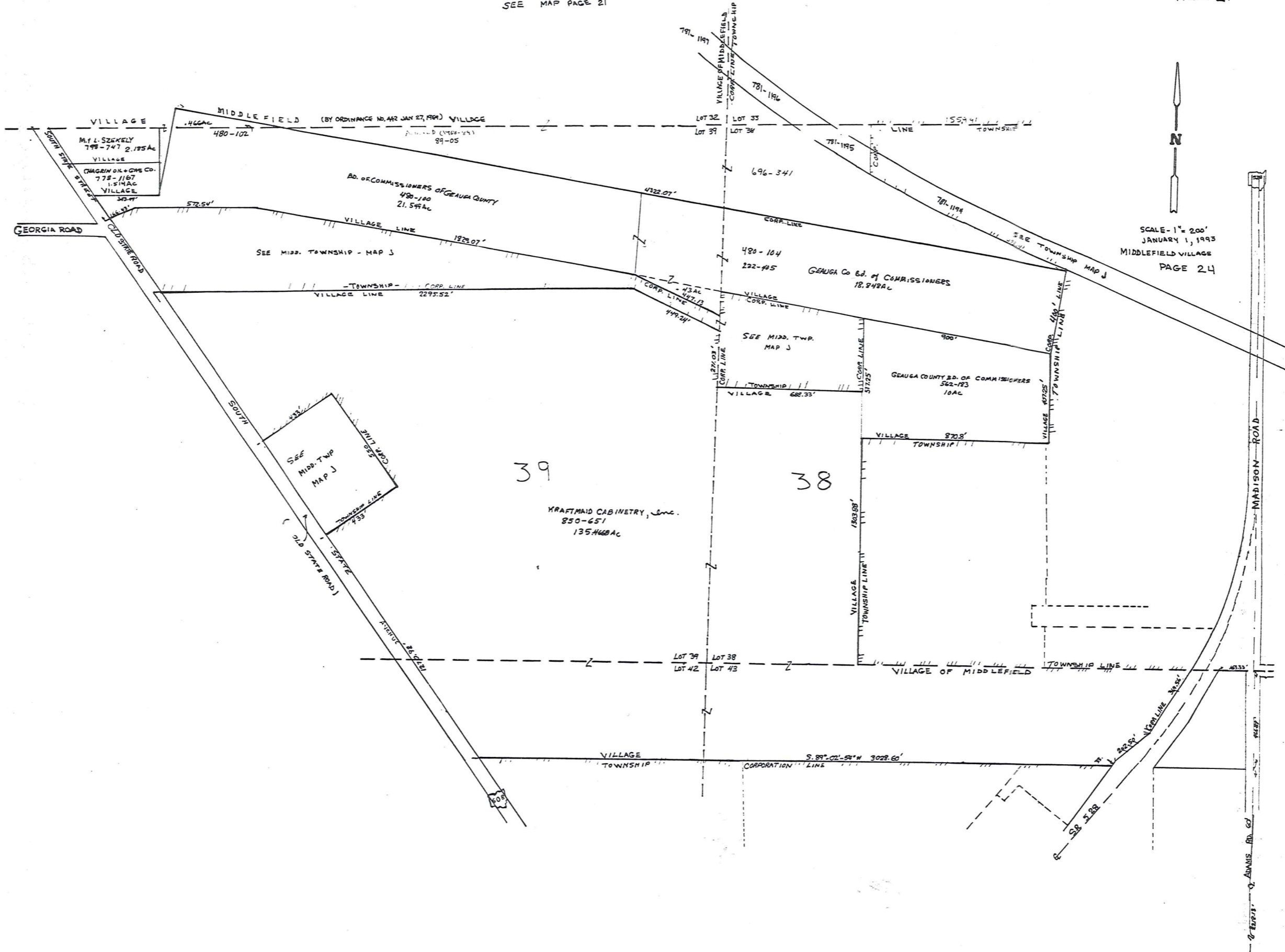
303

W. WALDEN



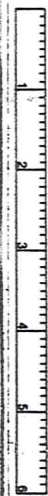
SCALE 1"=200'
 JAN. 1, 1993
 RELATIVE REPRESENTATION

SEE MAP PAGE 21



SCALE - 1" = 200'
 JANUARY 1, 1993
 MIDDLEFIELD VILLAGE
 PAGE 24

TRW-REDI
 SCALE IN 1/10 OF AN INCH

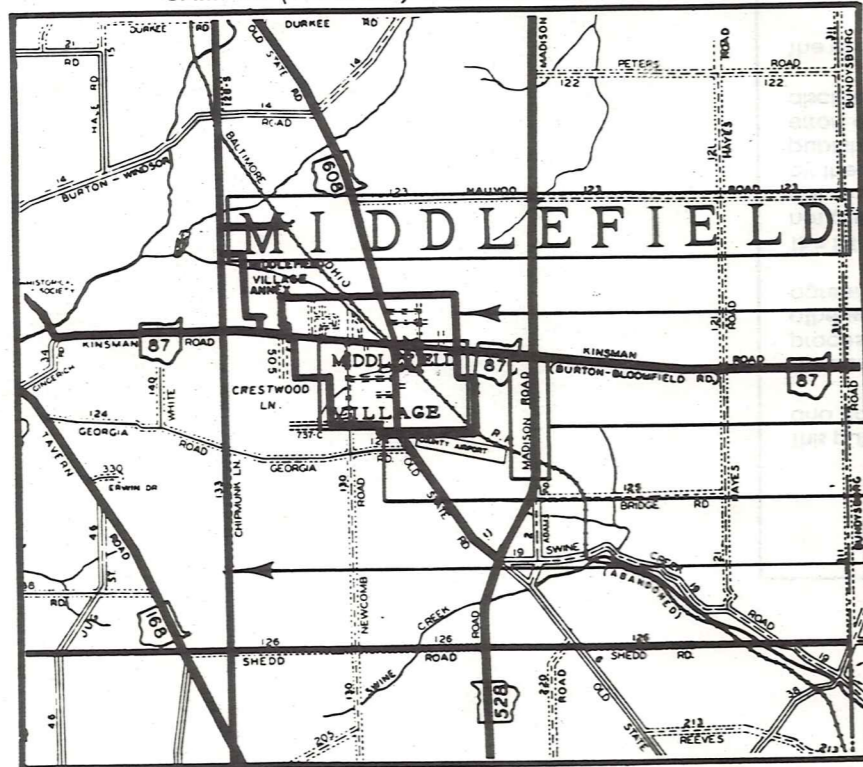


1-800-345-7334

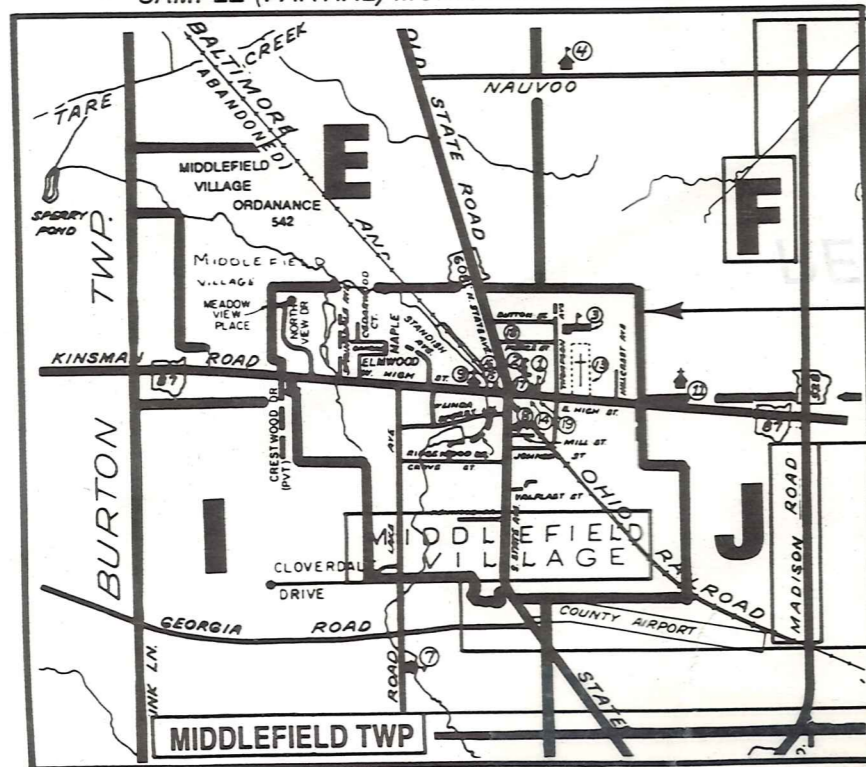
Explanation and Use Sheet for Geauga County, Ohio

A

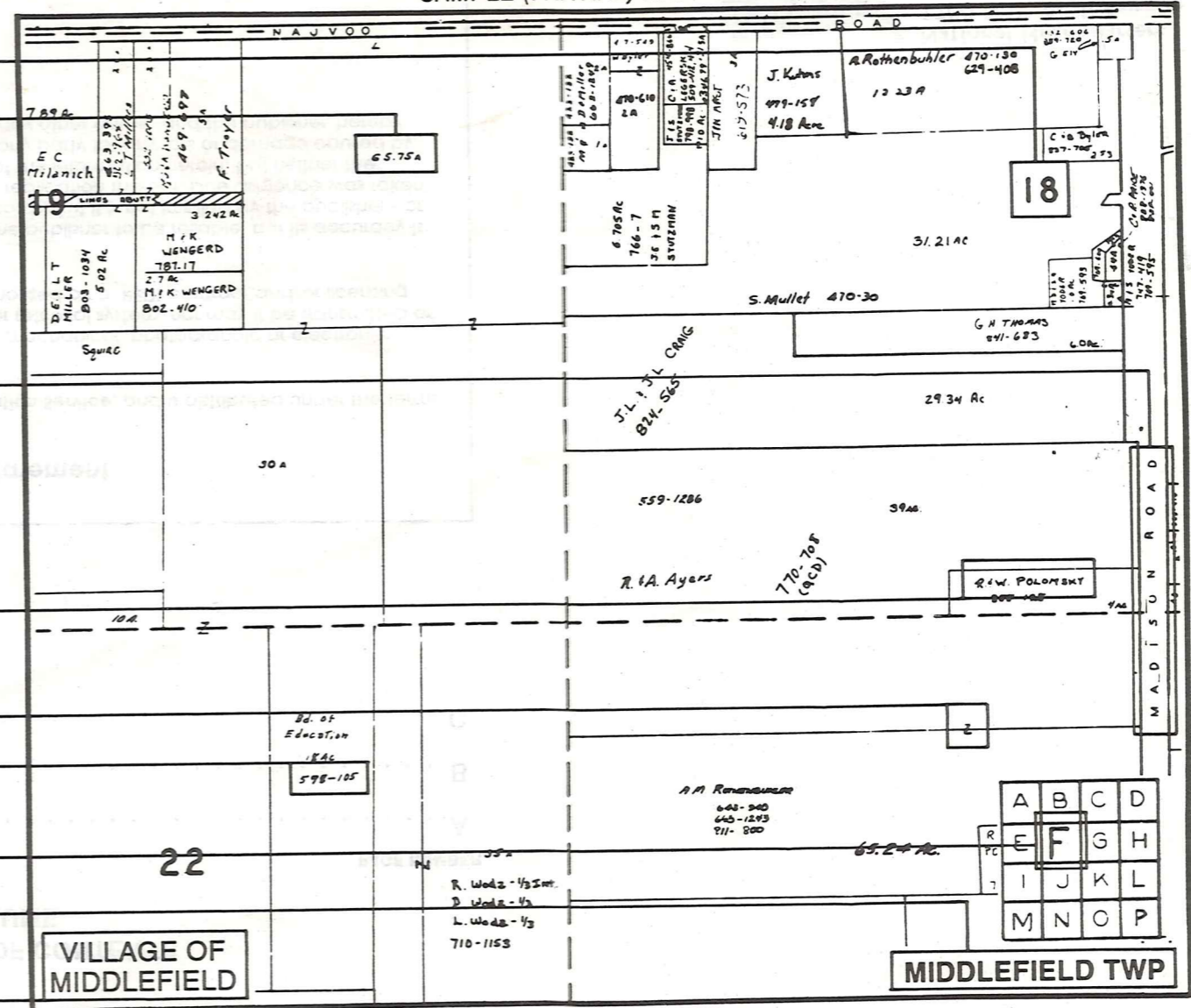
SAMPLE (PARTIAL) COUNTY INDEX MAP



SAMPLE (PARTIAL) MUNICIPALITY INDEX MAP



SAMPLE (PARTIAL) MAP PAGE



- Tract Lot Number
- Acreage
- Township Name
- Village Boundary
- Street Name
- Village Name
- Township Boundary
- Owners Name
- Denotes Continuous Ownership
- Deed Book & Page
- Map Page Number
- Township Name
- Village Name

- Village Boundary
- Street Name
- Village Name
- Township Name

USE OF THE MAP VOLUME

1. LOCATE THE GENERAL AREA OF INTEREST ON THE COUNTY INDEX MAP AND NOTE THE MUNICIPALITY NAME (TOWNSHIP OR VILLAGE).
 2. REFER TO THE TABLE OF CONTENTS AND NOTE THE BEGINNING ATLAS PAGE NUMBER FOR THE MUNICIPALITY OF INTEREST.
 3. TURN TO THE PAGE INDICATED, ON THIS PAGE WILL APPEAR AN INDEX MAP FOR THAT MUNICIPALITY.
 4. LOCATE THE GENERAL AREA OF INTEREST AND NOTE THE MAP PAGE NUMBER. THIS MAY BE EITHER A LETTER OR A NUMBER.
 5. MAP PAGES ARE IN ALPHABETICAL (OR NUMERICAL) SEQUENCE FOLLOWING THE MUNICIPALITY INDEX MAP. FOLLOW SEQUENCE TO THE MAP PAGE INDICATED.
 6. LOCATE SPECIFIC PARCEL OF INTEREST AND NOTE THE DESIRED INFORMATION.
- NOTE: ON SOME MAPS YOU MAY BE REFERRED TO A DETAIL SHEET SHOWING AN ENLARGEMENT OF THE AREA. THESE MAPS ARE FOUND AT THE END OF THE REGULAR MAP PAGES IN EACH MUNICIPALITY IN EITHER ALPHABETICAL OR NUMERICAL SEQUENCE.
- NOTE: CHARDON VILLAGE HAS TITLE SHEETS. TO LOCATE OWNERS NAME, NOTE THE PARCEL NUMBER, REFER TO THE TITLE PAGE FOLLOWING THE MAP OF INTEREST, FOLLOW NUMERICAL SEQUENCE TO THE PARCEL NUMBER OF INTEREST AND NOTE THE DESIRED INFORMATION. IN ALL OTHER MUNICIPALITIES THE OWNERS NAME APPEARS ON THE MAP PAGE.